

BYT č. 2

označenie bytovej jednotky

prízemie

poschodie

4 - izbový

dispozícia bytu

101 m²

výmera bytu

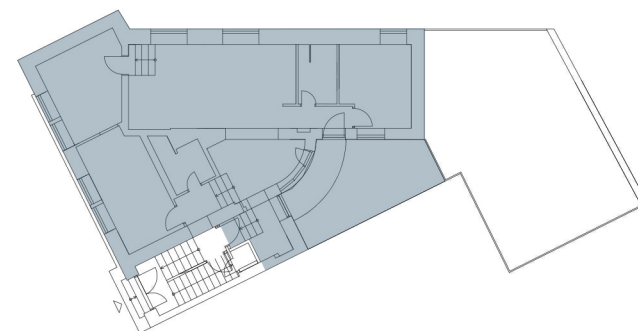
APARTMÁNY MOJMÍROVA



| | | |
|------|------------------|----------------------|
| 1.02 | PREDIZBA | 5,39 m ² |
| 1.03 | HALA | 10,71 m ² |
| 1.04 | CHODBA | 3,62 m ² |
| 1.05 | KÚPEĽŇA | 4,44 m ² |
| 1.06 | SPÁLŇA | 14,91 m ² |
| 1.07 | SPÁLŇA | 13,30 m ² |
| 1.08 | OBÝVAČKA + KUCH. | 28,51 m ² |
| 1.09 | CHODBA | 3,71 m ² |
| 1.10 | KÚPEĽŇA | 4,74 m ² |
| 1.11 | SPÁLŇA | 11,62 m ² |
| 1.12 | TERASA | 22,32 m ² |

BYT CELKOM

101 m²



pôdorys podlažia



apartment no. 2

designation of the housing unit

ground floor
floor

four-room
apartment layout

101 m²
area

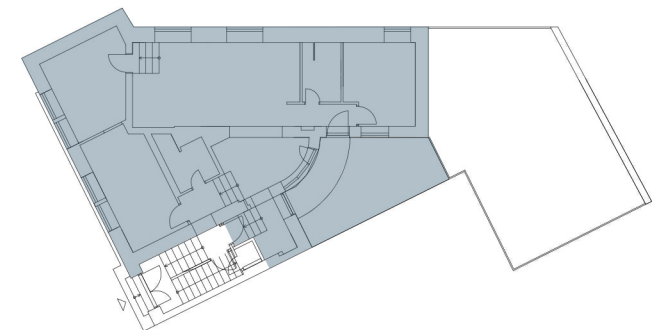
APARTMENTS MOJMÍROVA



| | | |
|------|---------------------|----------------------|
| 1.02 | HALLWAY | 5,39 m ² |
| 1.03 | LOUNGE | 10,71 m ² |
| 1.04 | CORRIDOR | 3,62 m ² |
| 1.05 | BATHROOM | 4,44 m ² |
| 1.06 | BEDROOM | 14,91 m ² |
| 1.07 | BEDROOM | 13,30 m ² |
| 1.08 | LIVING ROOM+KITCHEN | 28,51 m ² |
| 1.09 | CORRIDOR | 3,71 m ² |
| 1.10 | BATHROOM | 4,74 m ² |
| 1.11 | BEDROOM | 11,62 m ² |
| 1.12 | TERACCE | 22,32 m ² |

TOTAL AREA

101 m²



floor plan

